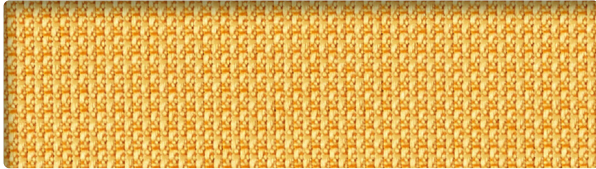
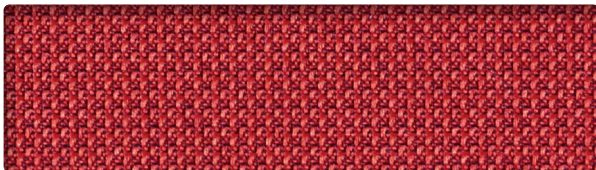


Grade E  
**OPTIC**

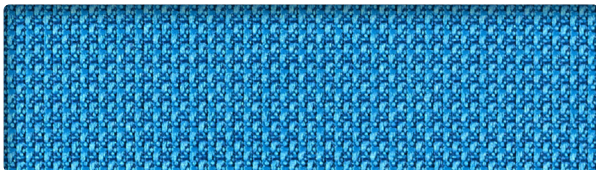
**ELEPHANT**  
424026



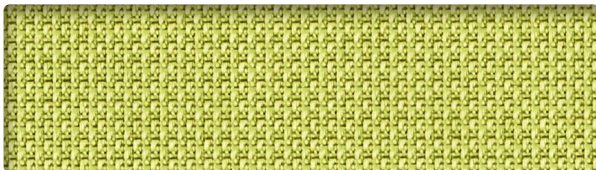
**TANGERINE**  
424019



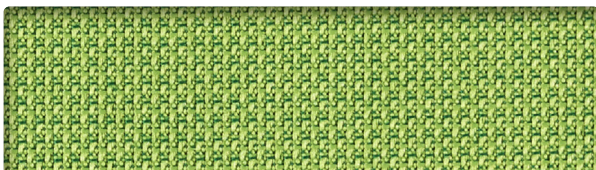
**RED**  
424001



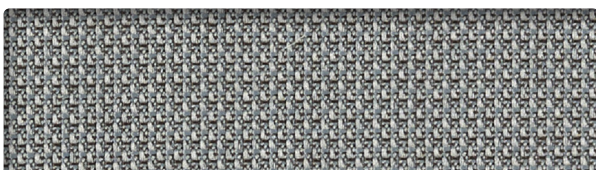
**OCEAN**  
424024



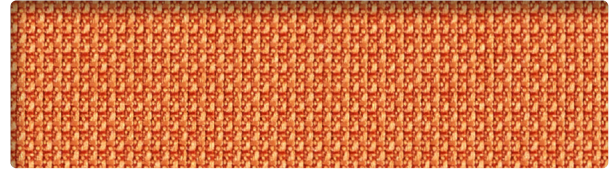
**GREEN APPLE**  
424013



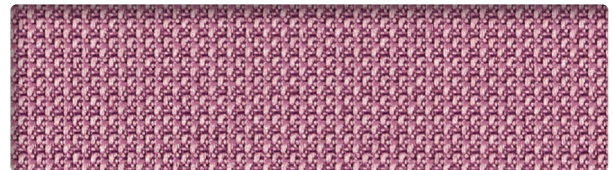
**SPRINGTIME**  
424023



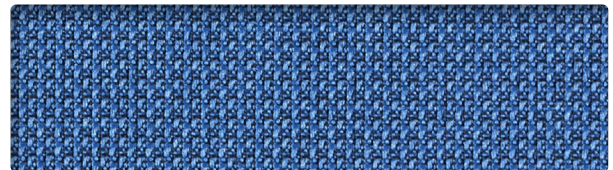
**COAL**  
424016



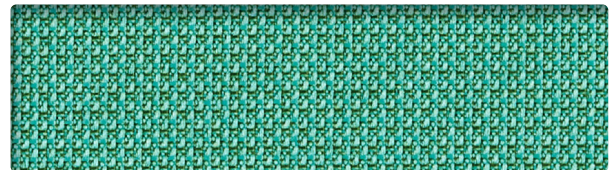
**SUNRISE**  
424009



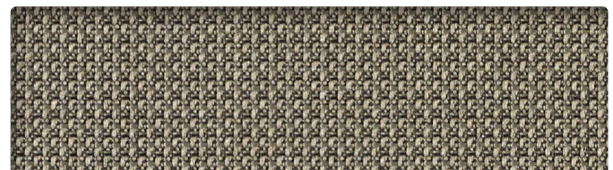
**MULBERRY**  
424005



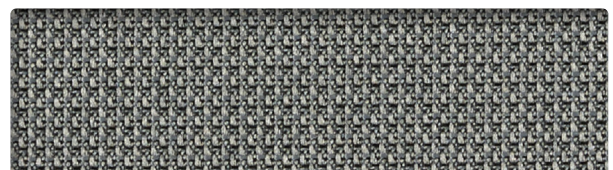
**YALE**  
424004



**MYRTLE**  
424033




**BROWN BEAR**  
424000



**ASH**  
424006

## INFORMATION TECHNIQUE

Patron - Largeur	Composition	Finis	Abrasion (D.F.)	Résistance à la lumière	Code de nettoyage
<b>OPTIC - 54"</b> 	83 % polyester recyclé post-consommation Endos: latex 17 % Polyester Endos: Latex	Antitache	185 000^	40 Heures Classe 4	WS


### CODE DE NETTOYAGE

- **W:** Utiliser un agent nettoyant à base d'eau ou de mousse.
- **WS:** Utiliser un agent nettoyant à base d'eau ou de mousse ou un solvant pur et sans eau.

### INFORMATION ADDITIONNELLE

**^Abrasion:** Plusieurs facteurs affectent la durabilité et l'apparence des recouvrements, notamment l'usage et l'entretien du produit. Les résultats de test Wyzenbeek supérieurs à 100 000 double frottements n'ont pas démontré être une mesure fiable de la longévité d'un recouvrement. Veuillez consulter le site web de Mayer pour d'autres spécifications techniques.

## TECHNICAL INFORMATION

Width - Pattern	Content	Finish	Abrasion (D.F.)	Lightfastness	Cleaning Code
<b>OPTIC - 54"</b> 	83 % Post-Consumer Recycled Polyester, 17 % Polyester Backing: Latex	Stain Repellent	185,000^	40 Hours Class 4	WS

### CLEANING CODE

- **W:** Water-based foam or cleaner.
- **WS:** Use water-based or foam cleaning agent, or pure water-free solvent.

### ADDITIONAL INFORMATION

**^Abrasion:** Multiple factors affect fabric durability and appearance retention, including end-user application and proper maintenance. Wyzenbeek results above 100,000 double rubs have not been shown to be a reliable indicator of increased fabric lifespan. Specifications: Specifications are correct at the time of printing. Additional specifications are available on our website.



10871, avenue Salk  
Montréal-Nord  
(Québec) Canada  
H1G 6M7

[bouty.com](http://bouty.com)



MAYERFABRICS

TF 800.428.4415



3450, 1re Rue  
Saint-Hubert  
(Québec) Canada  
J3Y 8Y5

[adi-artdesign.com](http://adi-artdesign.com)