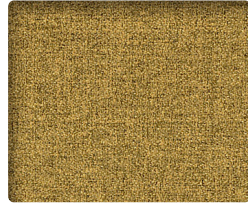


Grade A  
**MONROE**

**TURQUOISE**  
MO34



**STRAW**  
MO47



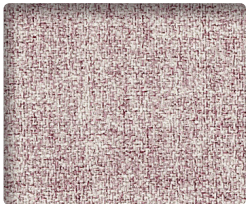
**COIN**  
MO57



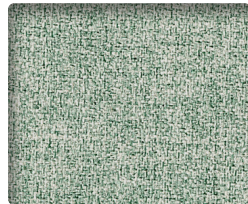
**BURLAP**  
MO605



**QUARTZ**  
MO81



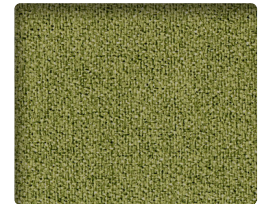
**WISTERIA**  
MO105



**CARIBBEAN**  
MO31



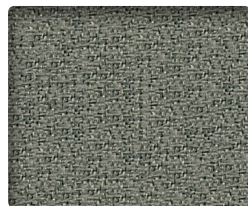
**PEWTER**  
MO9003



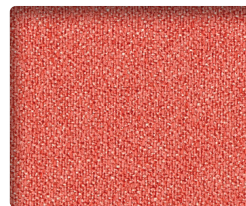
**SAGE**  
MO87



**MICA**  
MO902



**STEEL**  
MO9006



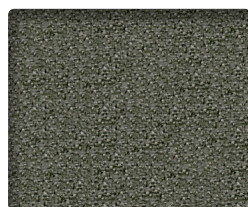
**CORAL**  
MO11



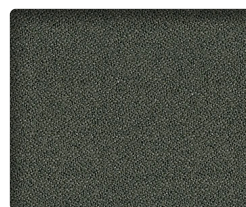
**SABLE**  
MO8009



**GRANITE**  
MO91



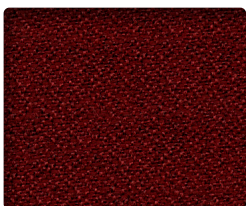
**MINERAL**  
MO86



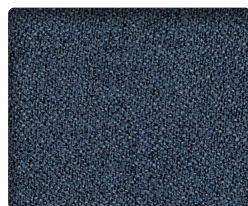
**CAPER**  
MO908



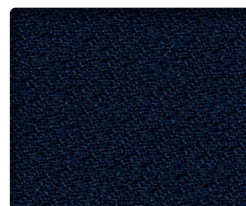
**BLACK**  
MO9009



**CHIPOTLE**  
MO14



**INDIGO**  
MO305



**NAVAL**  
MO308

## INFORMATION TECHNIQUE

Patron - Largeur	Composition	Fini	Abrasion (D.F.)	Résistance à la lumière	Code de nettoyage
<b>MONROE - 56"</b> 	100% Polyester	Naturel	165 000	40 Heures Classe 4,5	W

### CODE DE NETTOYAGE

- W: Utiliser un savon doux à base d'eau ou une mousse à base d'eau.

## TECHNICAL INFORMATION

Width - Pattern	Content	Finish	Abrasion (D.F.)	Lightfastness	Cleaning Code
<b>MONROE - 56"</b> 	100% Polyester	Natural	165 000	40 Hours Class 4,5	W

### CLEANING CODE

- W: Use mild soap and water or a water based cleaning agent or water based foam.



6505, Boulevard Métropolitain Est  
Saint-Léonard (Quebec)  
Canada  
H1P 1X9

[bouty.com](http://bouty.com)



Échantillons disponibles via Bouty et Adi  
Memo samples are available via Bouty and Adi



3450, 1re Rue  
Saint-Hubert  
(Québec) Canada  
J3Y 8Y5

[adi-artdesign.com](http://adi-artdesign.com)