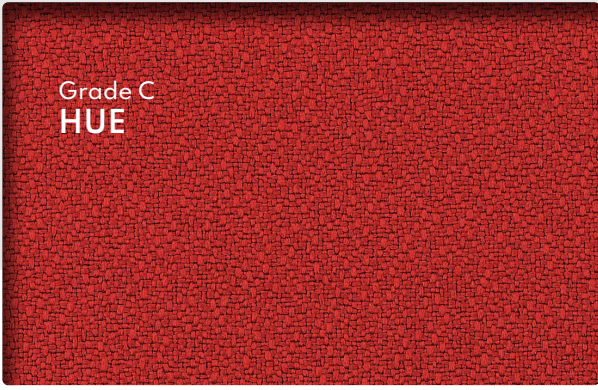
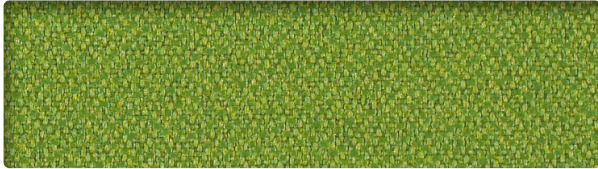


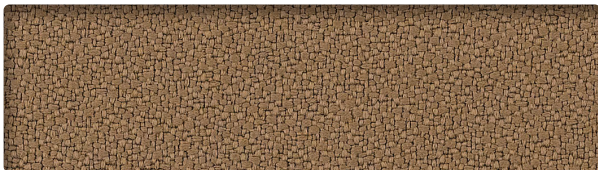
Grade C
HUE



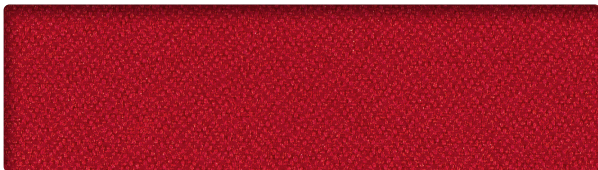
SALSA
HU226



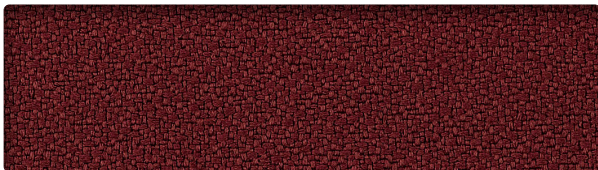
STEM
HU236



FROTHE
HU213



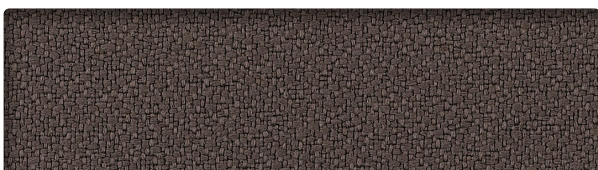
HIBISCUS
HU232



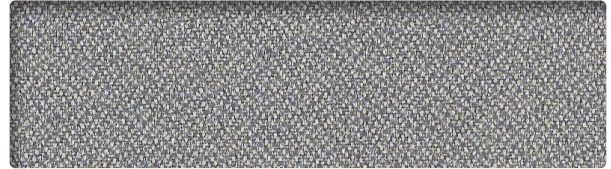
CURRENT
HU216



SHADE
HU235



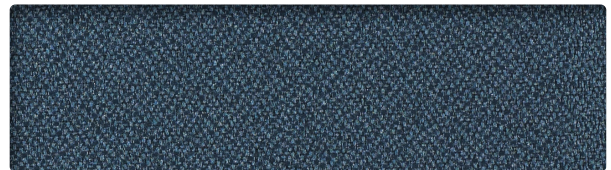
CHAR
HU219



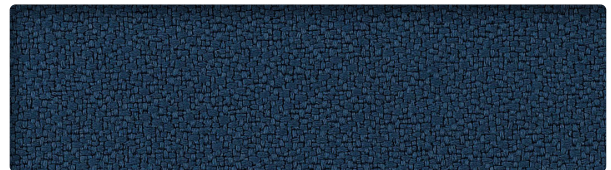
QUARRY
HU233



SMOKE
HU231



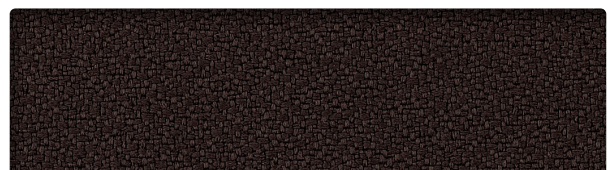
SEAPORT
HU234



NIGHT
HU220



INDIGO
HU228



BLACK
HU222

INFORMATION TECHNIQUE

| Patron - Largeur | Composition | Fin | Abrasion (D.F.) | Résistance à la lumière | Code de nettoyage |
|--|--|-------|-----------------|-------------------------|-------------------|
| HUE - 54"  | 65 % polyester recyclé post industriel 35 % polyester recyclé post consommation | Latex | 1 000 000 | 60 Heures Classe 4,5 | WS |

CODE DE NETTOYAGE

- **WS:** Utiliser un agent nettoyant à base d'eau ou de mousse ou un solvant pur et sans eau.

Plusieurs facteurs tels que le type d'utilisation et l'entretien peuvent influencer la durabilité et l'apparence originale. Les résultats Wyzenbeek dépassant 100 000 doubles frottements n'ont pas démontré être un gage de longévité accrue du produit.

TECHNICAL INFORMATION

| Width - Pattern | Content | Finish | Abrasion (D.F.) | Lightfastness | Cleaning Code |
|--|--|--------|-----------------|-----------------------|---------------|
| HUE - 54"  | 65 % Post Industrial Recycled Polyester 35 % Post Consumer recycled Polyester | Latex | 1 000 000 | 60 Hours Class 4,5 | WS |

CLEANING CODE

- **WS:** Use water-based or foam cleaning agent, or pure water-free solvent.

Multiple factors affect fabric durability and appearance retention, including end-user application and proper maintenance. Wyzenbeek results above 100,000 double rubs have not been shown to be an indicator of increased lifespan.



10871, avenue Salk
Montréal-Nord
(Québec) Canada
H1G 6M7

bouty.com

Échantillons disponibles via
Memo samples are available from

MOMENTUM
T E X T I L E S

memosamples.com | 800.366.6839



3450, 1re Rue
Saint-Hubert
(Québec) Canada
J3Y 8Y5

adi-artdesign.com