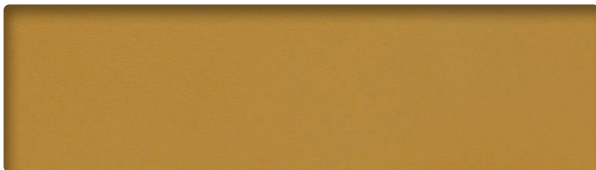


Grade D
ENDURANCE EPU

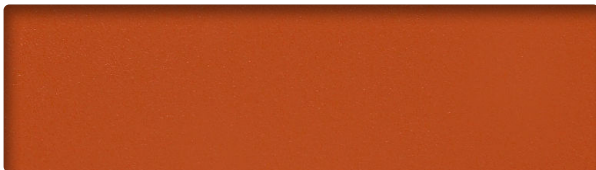
INK
EN2950



IVORY
EN2664



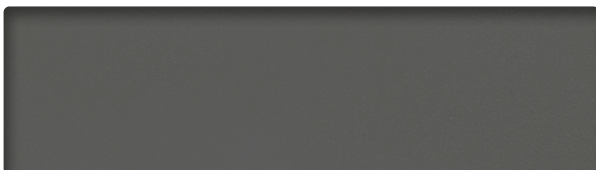
CHAI
EN2785



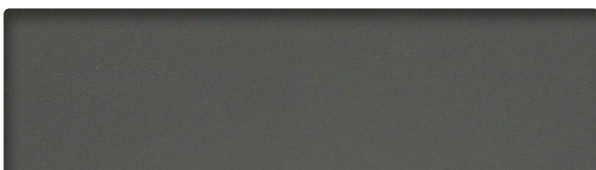
PAPRIKA
EN2818



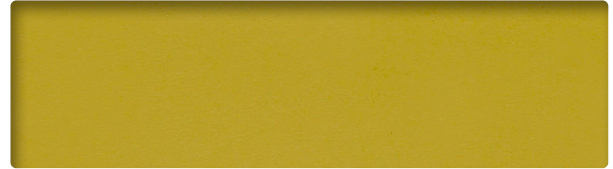
LICHEN
EN2741



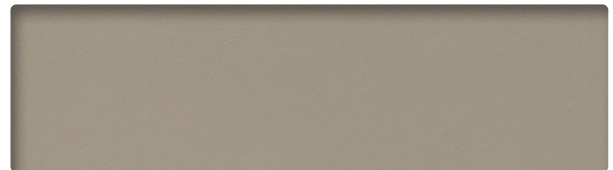
NORDIC
EN2708



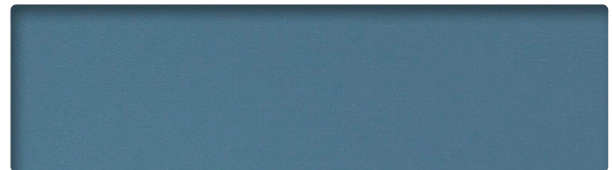
JETTY
EN2686



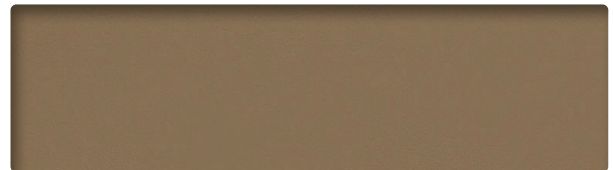
SPROUT
EN2873



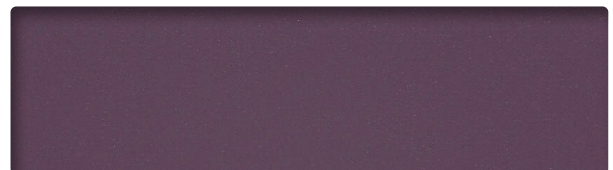
GULL
EN2697



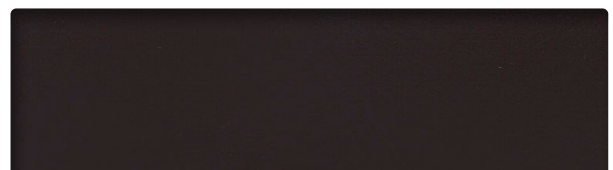
BLUEBELL
EN2939



TOBACCO
EN2598



PLUM
EN2840



NOIR
EN2675

INFORMATION TECHNIQUE

Patron - Largeur	Composition	Endos	Abrasion (D.F.)	Résistance à la lumière	Code de nettoyage
ENDURANCE EPU- 54" 	100 % polyuréthane EPU	Polyester	1 000 000	200 Heures Classe 4	WS Eau de Javel (4:1)

CODE DE NETTOYAGE

- **WS:** Mousse nettoyant à base d'eau.

Plusieurs facteurs tels que le type d'utilisation et l'entretien peuvent influencer la durabilité et l'apparence originale. Les résultats Wyzenbeek dépassant 100 000 doubles frottements n'ont pas démontré être un gage de longévité accrue du produit.

TECHNICAL INFORMATION

Width - Pattern	Content	Backing	Abrasion (D.F.)	Lightfastness	Cleaning Code
ENDURANCE EPU- 54" 	100 % EPU Polyurethane	Polyester	1,000,000	200 Hours Class 4	WS Bleach Cleanable (4:1)

CLEANING CODE

- **WS:** Water-based foam or cleaner.

Multiple factors affect fabric durability and appearance retention, including end-user application and proper maintenance. Wyzenbeek results above 100,000 double rubs have not been shown to be an indicator of increased lifespan.



10871, avenue Salk
Montréal-Nord
(Québec) Canada
H1G 6M7

bouty.com

Échantillons disponibles via
Memo samples are available from

MOMENTUM
T E X T I L E S

memosamples.com | 800.366.6839



3450, 1re Rue
Saint-Hubert
(Québec) Canada
J3Y 8Y5

adi-artdesign.com