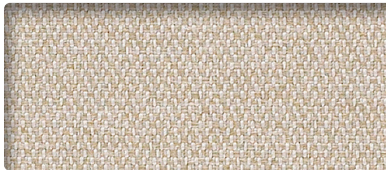


VINE  
IN2685



STUCCO  
IN2630



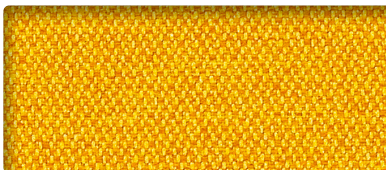
BARLEY  
IN2399



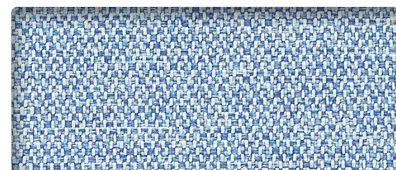
ALUMINUM  
IN2366



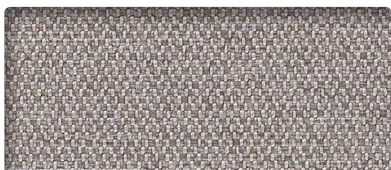
DOVE  
IN2443



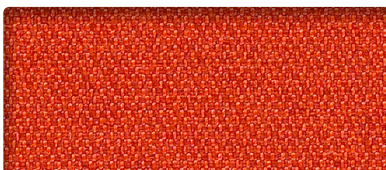
MAIZE  
IN5242



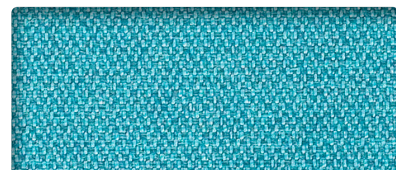
ASTER  
IN2377



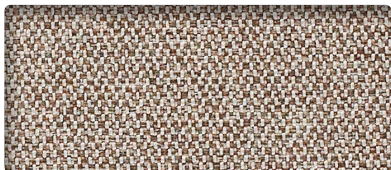
GULL  
IN2476



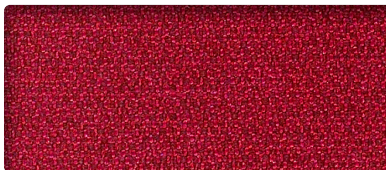
PAPAYA  
IN2553



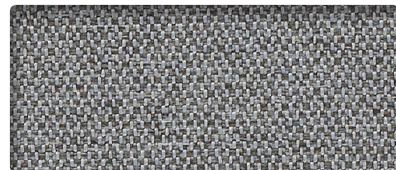
RINSE  
IN2597



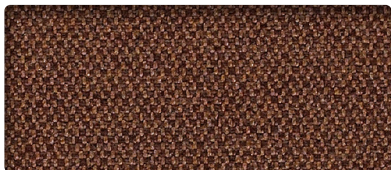
SABLE  
IN2619



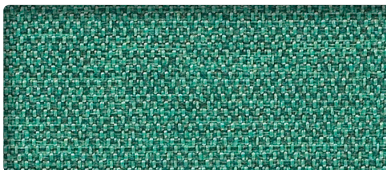
BERRY  
IN2410



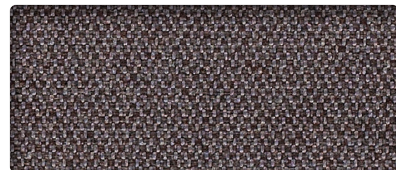
PEWTER  
IN2564



TERRAIN  
IN2641




ATOLL  
IN2388



GRAPHITE  
IN2465

## INFORMATION TECHNIQUE

Patron - Largeur	Teneur en fibres et endos	Fini	Abrasion (D.F.)	Résistance à la lumière	Code de nettoyage
<b>INFINITY - 57"</b> 	74 % polyester recyclé post-consommation 26 % polyester Endos en acrylique	C-Zero®	200 000	40 Heures Classe 4	WS

### CODE DE NETTOYAGE

- **WS:** Utiliser un agent nettoyant à base d'eau ou de mousse ou un solvant pur et sans eau.

Plusieurs facteurs tels que le type d'utilisation et l'entretien peuvent influencer la durabilité et l'apparence originale. Les résultats Wyzenbeek dépassant 100 000 doubles frottements n'ont pas démontré être un gage de longévité accrue du produit.

## TECHNICAL INFORMATION

Width - Pattern	Content	Finish	Abrasion (D.F.)	Lightfastness	Cleaning Code
<b>INFINITY - 57"</b> 	74 % Post Consumer Recycled Polyester 26 % Polyester Acrylic Backing	C-Zero®	200 000	40 Hours Class 4	WS

### CLEANING CODE

- **WS:** Use water-based or foam cleaning agent, or pure water-free solvent.

Multiple factors affect fabric durability and appearance retention, including end-user application and proper maintenance. Wyzenbeek results above 100,000 double rubs have not been shown to be an indicator of increased lifespan.



10871, avenue Salk  
Montréal-Nord  
(Québec) Canada  
H1G 6M7

[bouty.com](http://bouty.com)

Échantillons disponibles via  
Memo samples are available from

**MOMENTUM**  
T E X T I L E S

[memosamples.com](http://memosamples.com) | 800.366.6839



3450, 1re Rue  
Saint-Hubert  
(Québec) Canada  
J3Y 8Y5

[adi-artdesign.com](http://adi-artdesign.com)