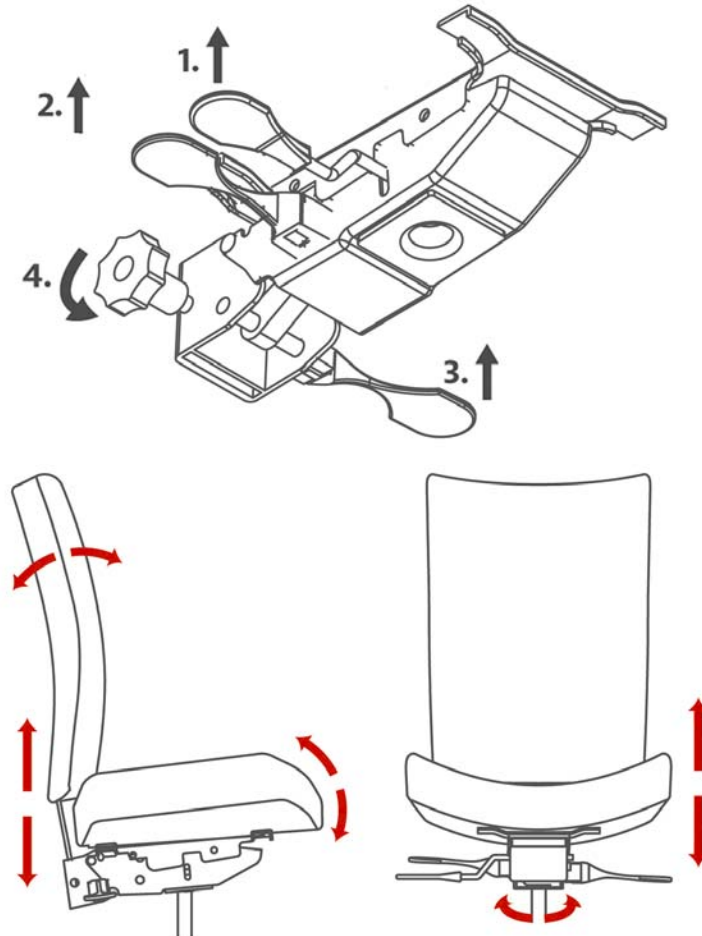


HDL-DSN mechanism instructions



1- Seat height adjustment

To lower the seat, stay seated and pull the lever up until the desired seat height is reached. To raise the seat, pull the lever while lifting your weight off the seat.

2- Seat angle adjustment

Pull the lever up and adjust the seat angle by moving your weight toward the front or back. Once set, release the lever.

3- Backrest angle adjustment

Bend forward to release pressure off the backrest. Pull the lever up, apply pressure with your back to position the backrest and release the lever.

4- Backrest height adjustment

Loosen the knob and slide the backrest up or down until it adequately supports the lumbar region. Once set, tighten the knob.